

The Australian Longicorn Beetle Genus *Coleocoptus* Aurivillius (Coleoptera: Cerambycidae)

QIAO WANG

(Communicated by C.N. Smithers)

School of Zoology, La Trobe University, Bundoora, Victoria, Australia 3083
(Present address: Department of Plant Science, Massey University,
Private Bag 11222, Palmerston North, New Zealand)

WANG, Q. (1996). The Australian longicorn beetle genus *Coleocoptus* Aurivillius (Coleoptera: Cerambycidae). *Proc. Linn. Soc. N.S.W.* 116, 187–192

The monotypic phoracanthine genus *Coleocoptus* is reviewed and redescribed. *C. senio* (Newman) is redescribed and illustrated. The distribution and biology of *C. senio* are noted.

Manuscript received 15 Jun 1994, accepted for publication 24 May 1995.

KEYWORDS: Cerambycidae, Phoracanthini, *Coleocoptus senio*, taxonomy, distribution, biology.

INTRODUCTION

Coleocoptus Aurivillius 1893 is a monotypic phoracanthine genus of exclusively Australian-New Guinean distribution. Aurivillius (1893) proposed the genus based on *Coptocercus sexmaculatus* Hope 1844. In 1912, Aurivillius synonymised *Coleocoptus sexmaculatus* (Hope) with *C. senio* (Newman) (= *Phoracantha senio* Newman 1840). The synonymy was confirmed when the types of these two species were examined.

Coleocoptus is most closely related to *Phoracantha* Newman, and according to Wang's (1994b) cladistic analysis, they are in fact sister genera. *Coleocoptus* differs from *Phoracantha* in having the prothorax distinctly longer than wide, and the elytra with truncate apices. Although *Coleocoptus* is monotypic, its distribution is almost as extensive as that of *Phoracantha* which includes at least forty species, many of which have very localised distributions (Wang 1995b). The adult of *C. senio* has never been well described and illustrated but the immature stages were well described by Duffy (1953, 1963) based on specimens obtained from *Syncarpia* in New South Wales.

Taxonomic terminology follows Wang (1993a,b; 1994a,b; 1995a,b; 1996) and Wang et al. (1994). Specimens for this study were borrowed from the following: Australian Museum, Sydney (AM), Australian National Insect Collection, Canberra (ANIC), Natural History Museum, London (BMNH), Museum of Victoria, Melbourne (MV), Northern Territory Museum, Darwin (NTM), Oxford University Museum, Oxford (OUM), Queensland Museum, Brisbane (QM), South Australian Museum, Adelaide (SAM), and University of Queensland Insect Collection, Brisbane (UQIC). The author's collection has been deposited in MV. Distribution data were obtained from specimens examined.

GENUS *COLEOCOPTUS* AURIVILLIUS

Coleocoptus Aurivillius 1893:160. Type species: *Coptocercus sexmaculatus* Hope 1844:195, by monotypy; Carter 1929:119, McKeown 1947:33.

Diagnosis

Distinguished by combination of head, pronotum, thoracic sternae and abdomen with depressed hairs; segments 3–7 of antennae with sharp apical unispines; prothorax longer than wide, with small spine at each side; 5 feebly raised nodules on pronotal disc; densely and heavily punctate throughout entire disc except medial nodule and anterior pair of nodules; elytra with pale unraised fascia(e); a cylindrical hair arising from each puncture on elytral disc; apex obliquely truncate without spines or processes; femora lineate or gradually thickened, with depressed hairs. Tegmen of male terminalia with 2 parameres; spined region of internal sac of aedeagus with 3 sections; styli of ovipositor arising terminally.

Comments

This genus is closely related to *Phoracantha* (Wang 1995b) but differs in having the prothorax distinctly longer than wide and the elytral apices truncate. It is also similar to *Phytocaria* Wang (Wang 1996) but differs in having prothorax distinctly longer than wide, each puncture on head and basal half of elytral disc with only 1 cylindrical depressed hair, and styli of ovipositor arising terminally.

COLEOCOPTUS SENIO (NEWMAN) (FIGS 1–3)

Phoracantha senio Newman 1840:4. — Newman 1842:352; Erichson 1842:247; Gahan 1893:172; Lea 1917:617; Lever 1946:10.

Coleocoptus senio. — Aurivillius 1917:5; McKeown 1947:33; Gressitt 1959:95; Duffy 1953:179, 1963:75.

Coptocercus sexmaculatus Hope 1841a:51. — Hope 1841b:63, 1844:195; Aurivillius 1893:160, 1912:93 (synonymy).

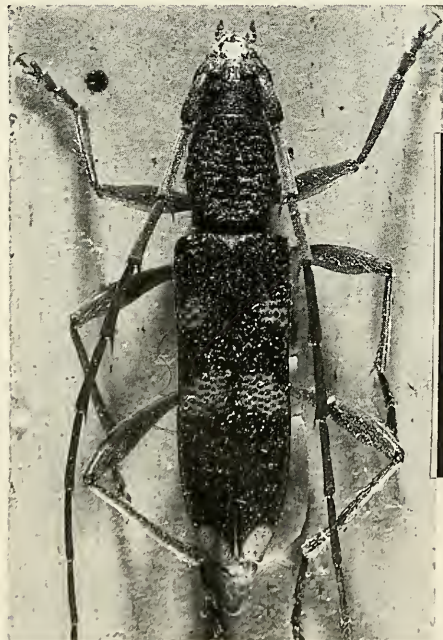
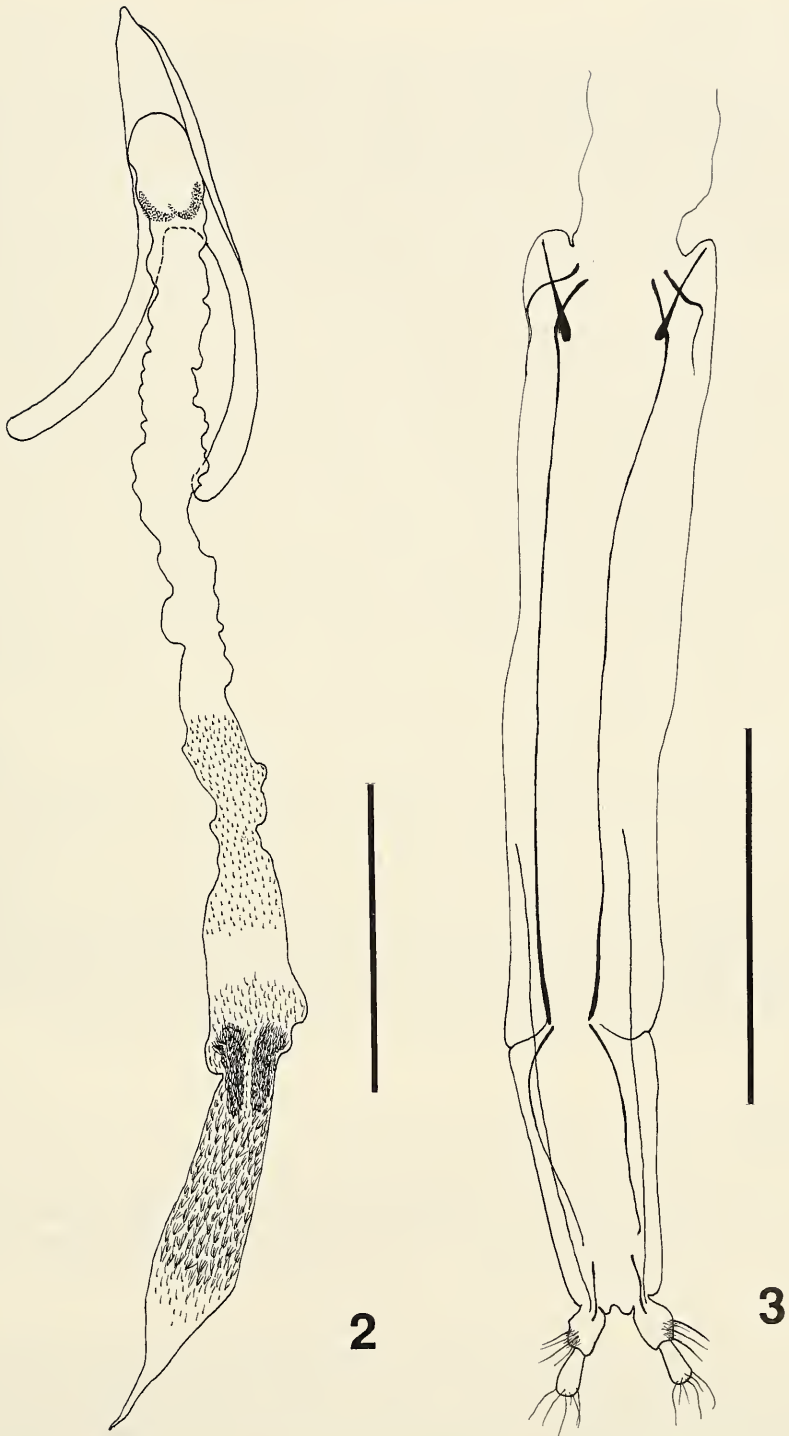


Fig. 1. Dorsal view of *C. senio*.



Figs. 2-3. Genitalia of *C. senio*: 2, median lobe and internal sac of male genitalia; 3, ovipositor.

Material examined

Types

P. senio. Holotype, female, SOUTH AUSTRALIA: Adelaide (BMNH, Ent Club 44–12).

C. sexmaculatus. Holotype, female, AUSTRALIA: no locality (OUM, Col 1786).

Other material, 235 males, 298 females [10 males, 8 females (AM); 12 males, 15 females (ANIC); 14 males, 18 females (BMNH); 46 males, 69 females, terminalia slides Nos Coleocoptus m-920613-1 and f-920613-1 (MV); 2 males, 1 female (NTM); 32 males, 36 females (QM); 86 males, 101 females (SAM); 33 males, 50 females (UQIC)].
 NORTHERN TERRITORY: Casuarina, 19.x.1976; Victoria River, 11.xi.1984; Barrow Ck (21°32'S, 133°53'E); McArthur River, 1.vi.1967; Port Darwin; Daly River (14°10'S, 131°20'E); Tennant Ck (19°39'S, 134°11'E); Cockatoo Ck (15°56'S, 129°03'E); Ranken Store, 65 km SE of Alexandria, 23.ix.1977; Alice Springs; Flora River, Sept.1912; Katherine River; QUEENSLAND: Springbrook, 26.iii.1966; Kedron, 5.iv.1958; South Percy Island (21°45'S, 150°18'E), 23–29.xi.1992; Flora (21°56'S, 148°33'E), Sept.1912; Lake Broadwater, via Dalby, 26–28.i.1985; Mornington Island (16°36'S, 139°21'E), 29.v.1960, at light; Fulham Vale, Jan.1892; Mt Spec, 7.xi.1969; Normanton, 25.v.1972; Birdsville, 17.ix.1977; Riversleigh HS, nr. Gregory River, 26–30.iv.1986, malaise trap; Lawes, 6.ii.1952; Wulguru, 12.x.1962; Mt. Nebo, 7.v.1959; Stanthorpe, 7.xii.1923; Toowoomba, 7.xii.1964; Cunnamulla; Augathella, 4.i.1974; Charleville, under bark of *Eucalyptus camaldulensis*, 8.i.1974; Mutchilba, Dec.1933; Brisbane, Nov.1909; Warwick, 1948; Blackburn, 10.iii.1940; NEW SOUTH WALES: Broken Hill, 10.xii.1966; Acacia Plateau, via Legume, 9.i.1967; Walgett, 30.xii.1971; Grafton, 26.ii.1967; Forest Reefs; Bourke, 26.xii.1973, at light; Merrimula, 23.ii.1950; Mullaley, Nov.1957; Canowindra, 10.i.1955; Sydney: Glen Roy, 25.xii.1953; Red Cliffs, 28.xii.1954; AUSTRALIAN CAPITAL TERRITORY: Canberra; VICTORIA: Mitchell Gorge, Jan.1929; Mildura, Jan.1937; Kiata, 27.xii.1918; Caulfield, 26.ii.1918; Benetook, 25.xi.1951; Rosanna, 17.iii.1953; Gippsland; Officer, 20.vii.1924; Ararat, 8.ii.1937; SOUTH AUSTRALIA: Leigh Ck (30°29'S, 138°25'E); Whyalla, 10.xi.1947; Scorpion Springs C.P., Nanam's Well, 17.xii.1983, at light; Blackwood, 18.xii.1960, at light; Devon Downs; Roxby Downs, 23.x.1976, at light, in *Acacia sowdenii* woodland; Ooldea; Athelstone, 1.iii.1986, at light; Kimba; Kangaroo Island, Feb.1888; Tumby Bay; Ardrossan; Yumbarra National Park, 11.xi.1975, at light; Emu Junction, Great Victoria Desert, 11.x.1976; Sturt Vale Station, 17.xi.1975, at light; Sandplain (29°09'S, 134°06'E), 25.x.1984, at light; Aldinga Sellicks, 2.iv.1987, at light; Olary, 19.xi.1975, under bark of red gum (*Angophora costata*); WESTERN AUSTRALIA: Swan River; Derby, 29.viii.1953; Gill Pinnacle, 10.xi.1963, at light; Meekatharra-Billiluna Pool, April 1930–Aug.1931; Esperance (33°52'S, 121°54'E), 5.i.1944; Kimberley; PAPUA NEW GUINEA: Port Moresby, Nov.-Dec.1958.

Description

Body length

male, 10–16.2 mm; female, 10.2–19.5 mm.

Colour

Antennae, legs and ventrites reddish brown with apical half of femora dark reddish brown; head, pronotum and elytra dark reddish brown to blackish brown. Elytra with following pale yellow markings: 1 narrow incomplete fascia at sub-base, 1 wider, more or less complete fascia at middle, and apices (Fig.1).

Head

Head with very dense large punctures of irregular form, each bearing a pale depressed hair. Distance between lower lobes of eyes 1.2–1.4 times distance between antennal socket and lateral angle of postclypeus, and 1.7–2 times distance between upper lobes of eyes. Antennae 1.3–1.5 times length of body in male and just slightly longer than body in female; segment 3 distinctly longer than segment 4 or 5, and 3–4 times length of its apical spine.

Thorax and abdomen

Nodules on pronotal disc: median one and anterior pair obvious and nitid but posterior pair vague and punctate; each puncture on pronotal disc with a long pale erect hair; sparse pale depressed hairs on disc; very small spine or process at each side. Elytra nitid, about 2.8–3 times length of prothorax in male but about 3–3.3 times length of prothorax in female; dense, large and deep punctures on basal half of disc, more than 50% of punctures with short pale depressed hair each, at most as long as diameter of punctures, and remaining punctures bearing long erect or sub-erect hair each; dense but small punctures on apical half of disc, more than 50% of punctures with very short pale depressed hair each, and remaining punctures with long erect hair each; punctures on basal half of disc aligned in rows. Abdomen nitid with dense pale depressed hairs.

Male terminalia

Apex of median lobe sharply pointed (Fig.2). Spined region of internal sac slightly longer than unspined region; spined region divided into 3 sections: first section about 1.5 times as long as second section, with fairly dense simple small and long spines; second section with fairly dense simple large and long spines in basal 2/5 and with mixture of dense multi-branched spines and sparse simple small and long spines in apical 3/5; 2 longitudinal dark areas, composed of very dense multi-branched spines in apical 3/5; third section about twice as long as second section, with mixture of dense multi-branched spines and sparse basally forked spines; a wide unspined gap between first and second sections (Fig.2). Eighth sternite obliquely truncate at terminal sides; dense long setae arising from it laterally and terminally; setae present in mid-terminal area; dense microspines on ventral surface. Apex of eighth tergite more or less rounded.

Ovipositor

As in Fig.3.

Variation

The two pale fasciae of the elytra may be widened and connected with each other to form a broad fascia.

Biology

Hosts are *Syncarpia laurifolia* (Duffy 1953 and 1963), *Acacia leiocalyx* (Hockey and Baar 1988), *A. sowdenii* (?), *Eucalyptus botryoides*, *E. crebra* (Webb 1987), *E. camaldulensis* and *Angophora costata*. Larvae feed under the bark of the hosts. Adults were collected at light and under the bark of their hosts during all months except June and July.

Distribution

Northern, southern, eastern and central Northern Territory, northern, eastern and southern Queensland, eastern, northern, southern and western New South Wales, Australian Capital Territory, Victoria, southern and south-eastern South Australia, south-western, northern and far south-eastern Western Australia, south-eastern Papua New Guinea; introduced into New Zealand and Fiji.

ACKNOWLEDGEMENTS

I thank K. Walker (NMV), S.L. Shute (BMNH), E.G. Matthews (SAM), C. O'Toole (OUM), M.S. Moulds (AM), T.A. Weir (ANIC), A. Wells (NTM), G.B. Monteith (QM) and M. Schneider (UQIC) for making available the material included in this study. T.R. New and I.W.B. Thornton reviewed and provided helpful advice on the early manuscript,

which I greatly appreciate. I also thank two anonymous referees and an overseer for their criticism, suggestions and comments on the manuscript. This study was supported by a La Trobe University Postgraduate Scholarship and an Australian Development and Cooperation Scheme Scholarship, and financial assistance from La Trobe University School of Zoology, University of California Department of Entomology at Riverside, and Southwest Agricultural University, Sichuan, China.

REFERENCES

- Aurivillius, P.O.C. (1893). Verzeichniss der von Herren C. Lumhltz und C. Frestedt im nördlichen Queensland gesammelten Cerambyciden. *Entomologisk Tidskrift* **14**, 153–169.
- Aurivillius, P.O.C. (1912). Cerambycidae: Cerambycinae. In 'Coleopterorum Catalogus, Vol. XXII. Cerambycidae I' (Ed. S. Schenkling) pp 1–574 (Junk: Berlin).
- Aurivillius, P.O.C. (1917). Results of Dr. E. Mjöberg's Swedish Scientific Expeditions to Australia 1910–1913. Part 12. Cerambycidae. *Arkiv foer Zoologi* **10**, 1–50.
- Carter, H.J. (1929). Revision of the Australian Phoracanthini (Cerambycidae), with notes and descriptions of new species of this group and allied genera. *Proceedings of the Linnean Society of N. S. W.* **54**, 118–136.
- Duffy, E.A.J. (1953). 'A Monograph of the Immature Stages of British and Imported Timber Beetles (Cerambycidae)'. (British Museum, Natural History: London).
- Duffy, E.A.J. (1963). 'A Monograph of the Immature Stages of Australasian Timber Beetles (Cerambycidae)'. (British Museum, Natural History: London).
- Erichson, W.F. (1842). Beitrag zur fauna von vandiemensland mit besonderer rucksicht auf die geographiche verbreitung der insecten. *Archiv fur Naturgeschichte* **8**, 83–287.
- Gahan, C.J. (1893). Notes on the longicornia of Australia and Tasmania, Part I., with a list of the species collected by Mr. J.J. Walker and descriptions of new forms. *Transactions of the Entomological Society of London* **2**, 165–197.
- Gressitt, J.L. (1959). Longicorn beetles from New Guinea, I (Cerambycidae). *Pacific Insects* **1**, 59–171.
- Hockey, M.J., and de Baar, M. (1988). New larval food plants and notes for some Australian Cerambycidae (Coleoptera). *Australian Entomological Magazine* **15**, 59–66.
- Hope, F.W. (1841)a. An extract of observations on the Stenochoridae of New Holland, with descriptions of new genera and species of that family. *Proceedings of the Zoological Society of London* **8**, 46–55. [Note: this is an extract of Hope's (1844) paper. See below]
- Hope, F.P. (1841)b. Observations on the Stenochoridae of New Holland. *Annals and Magazine of Natural History* **7**, 58–67.
- Hope, F.W. (1844). Observations on the Stenochoridae of New Holland, with descriptions of new genera and species of that family. *Transactions of the Zoological Society of London* **3**, 187–202.
- Lea, A.M. (1917). Results of the South Australian Museum expedition to Strzelecki and Cooper Creeks September and October 1916: Insecta. *Transactions of the Royal Society of South Australia* **41**, 489–630.
- Lever, R.J.A.W. (1946). Entomological notes. *Agricultural Journal of Fiji* **17**, 9–15.
- McKeown, K.C. (1947). Catalogue of the Cerambycidae of Australia. *Memoirs of the Australian Museum* **10**, 1–190.
- Newman, E. (1840). Entomological notes: Coleoptera, Cerambycites. *The Entomologist* **1**, 1–16.
- Newman, E. (1842). List of longicorns collected at Port Philip, South Australia, by Edmund Higgins. *The Entomologist* **22**, 351–354.
- Wang, Q. (1993)a. A revision of *Atesta* Pascoe (Coleoptera: Cerambycidae, Phoracanthini) from Australia, with descriptions of eighteen new species. *Invertebrate Taxonomy* **7**, 961–1024.
- Wang, Q. (1993)b. *Paratesta* gen.n. (Coleoptera: Cerambycidae) from Australia. *Journal of the Australian Entomological Society* **32**, 369–377.
- Wang, Q. (1994)a. The monotypic genus *Epithora* Pascoe (Coleoptera: Cerambycidae: Phoracanthini) from Australia: taxonomic review and ecological notes. *Giornale Italiano di Entomologia* **7**, 79–86.
- Wang, Q. (1994)b. 'Systematics, Biogeography and Ecology of Australian Phoracanthine Borers (Coleoptera: Cerambycidae)'. PhD thesis, La Trobe University, Melbourne.
- Wang, Q. (1995)a. The Australian longicorn beetle genus *Skeletodes* Newman (Coleoptera: Cerambycidae). *The Coleopterists Bulletin* **49**, 109–118.
- Wang, Q. (1995)b. A taxonomic revision of the Australian genus *Phoracantha* Newman (Coleoptera: Cerambycidae). *Invertebrate Taxonomy* **9**, 865–958.
- Wang, Q. (1996). *Phytocaria* Wang, a new genus of Phoracanthini, with a new species from Australia (Coleoptera: Cerambycidae: Cerambycinae). *The Coleopterists Bulletin* **50** in press
- Wang, Q., Thornton, I.W.B. and New, T.R. (1994). Systematics and biogeography of the Australian-New Guinean genus *Thoris* Pascoe (Coleoptera: Cerambycidae: Phoracanthini). *Invertebrate Taxonomy* **8**, 839–860.
- Webb, G.A. (1987). Larval host plants of Australian Cerambycidae (Coleoptera) held in some Australian insect collections. *Forestry Commission of New South Wales Technical Paper* **8**, 1–19.